

Reader of MIFARE® contactless cards for high-pressure, vacuum terminals and any equipment fitted with a coin mechanism



Cartadis TCM2-CSHP is a reader of contactless cards using the purse featured on CARTADIS contactless cards.

Fitted on a High-pressure terminal:

Each user can pay by just touching the reader with his card to increment the counter of the high-pressure terminal. It is also possible to let the subscription card on the reader, the credit will be debited at the end of a timeout.

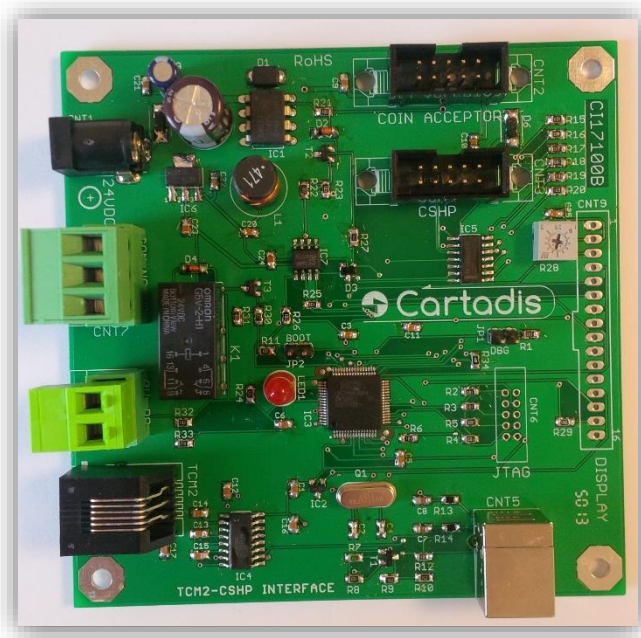
TCM2-CSHP is configured by using a PC to set the selling prices of services.

The benefits of Cartadis TCM2-CSHP for your customers

- ✓ Modern and rewarding equipment, MIFARE card payment also saves time in front of the machine.
- ✓ MIFARE card may be written with units or currency.
- ✓ MIFARE card is debited of a fixed amount at every touch on the reader.

TCM2-CSHP: Kit for improving terminals already in use

- ✓ MIFARE card can be used in purse mode on all equipment featuring a coin-interface of the NRIG13 or Comestero RM5 type.



- ✓ The CCI interface (photo above) enables the coin mechanism and sends a number of pulses adjustable. These pulses simulate one or more insertions of coins.
- ✓ This kit improves your installations ensuring a loyalty of the site by means of contactless cards.

Specifications

- ✓ Cards must be of the CARTADIS purse type.
- ✓ Fitted with indicators and a buzzer for power-on and reading.
- ✓ The interface runs up to 5cm (according to the transponder).
- ✓ Dimensions of the TCM2-CSHP: L = 90 mm ; D = 35 mm ; h = 30 mm ; Weight = 180 Gr.
- ✓ Dimensions of the CCI interface: L = 100 mm ; D = 30 mm ; h = 100 mm ; Weight = 70 Gr.
- ✓ Power supply: 24Vdc 100mA via the coin power.

CARTADIS

Zone des Marais – 1 Av., Louison Bobet
94120 Fontenay-sous-Bois – France
Tel.: (33) 01 48 77 40 60 – Fax: (33) 01 48 77 36 47
sales@cartadis.com
www.cartadis.com

Your local dealer